



PRODUCT FEATURES

COMPACT FIXTURE HOUSING

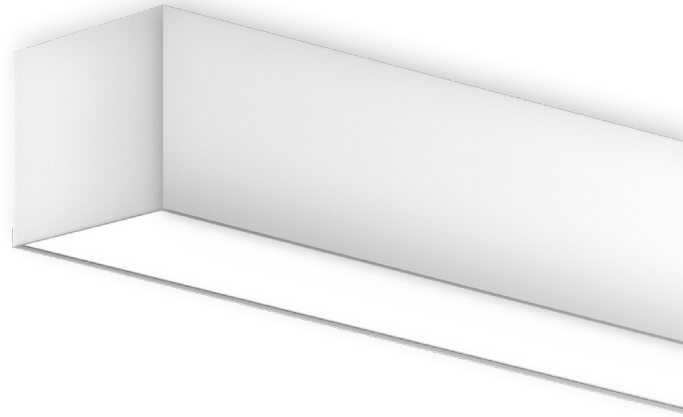
Width: 3.0" Height: 3.5"

ONE-PIECE EXTRUDED ALUMINUM HOUSING

One-Piece Extruded Aluminum Housing Ensures Straighter Rows and Consistent Lens Retention

120/277VAC 0-10 VOLT DIMMING TO 1% STANDARD

94-96 LUMENS PER WATT



ORDERING GUIDE EX: 3C - 24 - LD - 35 - T1 - WH - EM[1]

SERIES	LENGTH	OUTPUT	CCT	FINISH
3C	XX FT 2" INCREMENTS MAX 72" EX: 4' = 04	HD 1000 LM/FT MD 750 LM/FT LD 500 LM/FT	30 3000K 35 3500K 40 4000K	WH WHITE BLK BLACK

OPTIONS

ADD OPTIONS

EM *EMERGENCY BATTERY PACK (ADD QUANTITIES BELOW)

WW WALL WASH



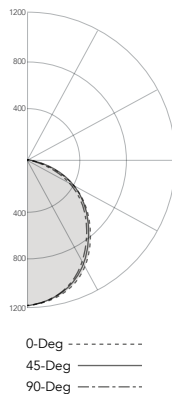
*NOT AVAILABLE IN 2' FIXTURES

NOTES
UNITS WITH EM PACKS QUANTITY MUST BE THE SAME OR LESS THAN THE TOTAL RUN FIXTURE COUNT. NOT ALL OPTIONS ARE AVAILABLE WITH OTHER OPTIONS.
WALL WASH NOT AVAILABLE WITH EM BATTERY PACK.

PHOTOMETRICS

3C-04-MD-30

Total Lumens: 3,052
Ratio: 0% Up and 100% Down
Wattage: 31.80
Efficacy: 96.00 (Lumens Per Watt)
Fixture Length: Four Feet

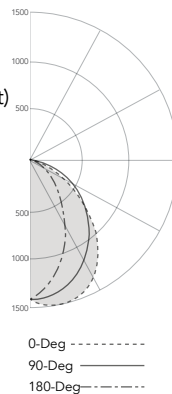


ZONAL LUMEN SUMMARY

Zone	Lumens	% Fixt
0 - 30	888	29.1
0 - 40	1427	46.8
0 - 60	2443	80.0
0 - 90	3052	100.0
90 - 180	0	0.0
0 - 180	3052	100.0

3C-04-MD-30-WW

Total Lumens: 3,308
Ratio: 0% Up and 100% Down
Wattage: 31.6
Efficacy: 104.68 (Lumens Per Watt)
Fixture Length: Four Feet



ZONAL LUMEN SUMMARY

Zone	Lumens	% Fixt
0 - 30	1057	32.0
0 - 40	1683	50.9
0 - 60	2769	83.7
0 - 90	3308	100.0
90 - 180	0	0.0
0 - 180	3308	100.0

ENERGY CONSUMPTION

WATTS PER LINEAR FOOT

SYMMETRICAL DOWN LIGHT

	H:1000	M:750	L:500
WATTS/FT	10.40	7.95	5.48
LUMENS/FT	980.75	763.00	524.25
LUMENS/W	94.30	96.00	95.80

WALL WASH

	H:1000	M:750	L:500
WATTS/FT	10.53	7.90	5.38
LUMENS/FT	1072.50	827.00	565.00
LUMENS/W	101.90	104.68	105.12

OPERATION

Light Engine:

The 3C is available in 3000K, 3500K & 4000K CCT all within a 2.5-Step MacAdam Ellipse and has a standard CRI of 80+.

Optics:

The back lit extruded acrylic lens ensures high efficiency light output, in a minimal form factor for a clean, evenly illuminated lower surface with minimal glare.

Wall Wash:

Asymmetric extruded aluminum reflector with recessed extruded acrylic lens to achieve a superior wall uniformity while minimizing glare.

Electrical:

Class 2 programmable (factory pre-set) premium power supply, 120-277VAC input. Power factor >0.9. THD <15%. Integral Surge Protection to 2KV.

Dimming:

The 3C comes standard with 0-10V dimming down to 1%.

Emergency Battery Pack:

UL Listed 924 Emergency System has been Engineered to Exceed UL Minimum Safety Standards. Fixture/rows will be supplied with four wire line volt & two wire low volt feed wires. Normal/em fixture drivers will be wired to "black" switched hot lead with a "red" un-switched through wire wired to em battery pack units "qty to be specified" in nomenclature string. Contractor will determine which fixture is the main feed point and terminate fixture leads as appropriate. For most fixtures, the entire direct portion of the fixture will be illuminated by the EM Battery Pack. For 10' High-Output and 12' Medium & High-Output only the first 8' of the direct portion of the fixture will be illuminated by the EM Battery Pack.

Emergency Circuit:

Contractor will determine which fixture is the emergency feed point and terminate fixture leads as appropriate. One driver per fixture section typical.

GENERAL

Warranty:

Ten (10) Year limited warranty from date of shipment

Lumen Maintenance:

Rated for 85% initial lumen output at 50,000 Hours of operation, operated at 25C ambient temperature; per TM-21 Guidelines published by the Illuminating Engineering Society (IES).

Certification

All Luminaires are UL and cUL listed, approved for Dry/Damp locations.
All EM Units are UL 924 listed.

Shipping

2-Week lead time for orders up to 1000 Linear Feet.

4-Week lead time for orders with a Black finish.

Orders Greater than 1,000' to be determined at time of order.

MECHANICAL

Housing Construction:

Extruded Aluminum 6063-T5 alloy outer housing with die-formed steel internal components for strength, alignment and mounting attachment.

Alignment/Assembly:

The alignment system employs a six-point alignment and attachment method, designed to create straighter rows and minimize seams between sections (field assembled). Four alignment pins ensure the outer extruded aluminum rails are aligned, while two draw-screws secure housing-to-housing attachment.

Lengths:

The 3C is available in a minimum 2-foot (nominal) length with additional 2-foot increments available. Longer fixture rows are available and will be configured per ALL factory specifications; typical rows are configured with 4-foot & 8-foot fixtures.

Mounting Method/Hardware:

The 3C is available for mounting upon any ceiling type, additional mounting hardware available by others.

Exterior Finish:

The 3C is available in White and Black polyester powder coat finish to ensure durability.

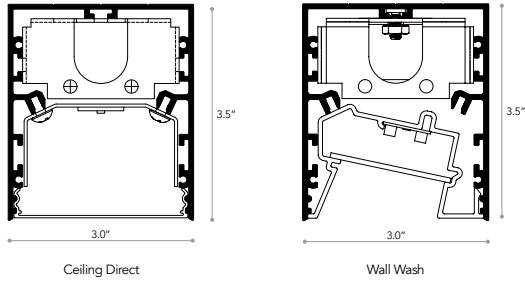
Made in the USA

All ALL Luminaires and Components (with the exception of our LED boards and drivers) are proudly manufactured and assembled in the USA.

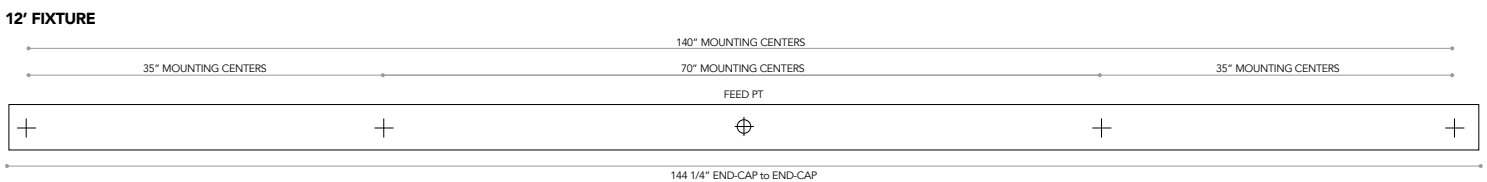
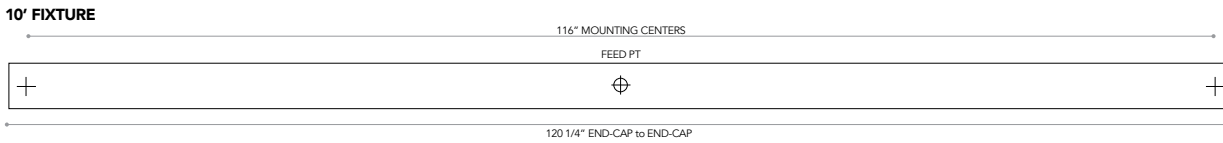
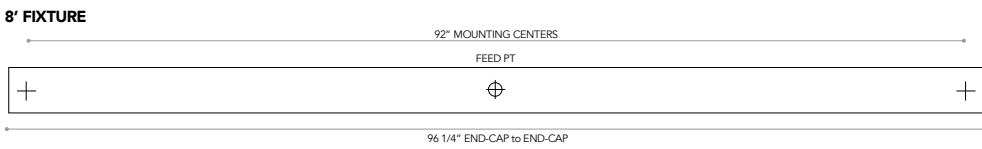
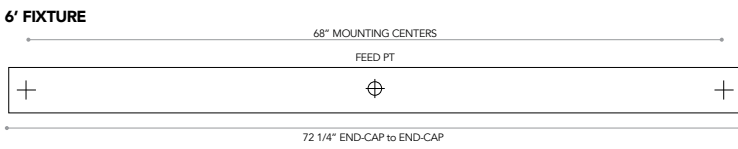
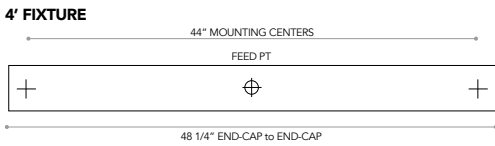
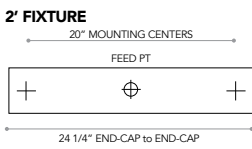
On Site Installation Notes:

Fixture/rows will be supplied with the appropriate hardware kits to join fixtures together for specified row(s) length. End plate kits will also be supplied as required per row specifications. Joiner kits are to be assembled to the inside of the fixture housing. "See assembly instructions"

MOUNTING DETAILS

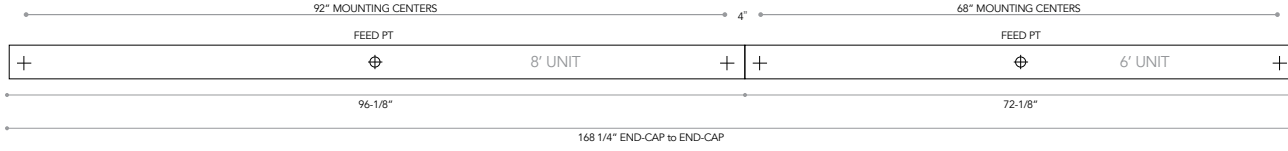


FIXTURE ROW LAYOUT: SINGLE UNIT 2' - 4' - 6' - 8' - 10' - 12'

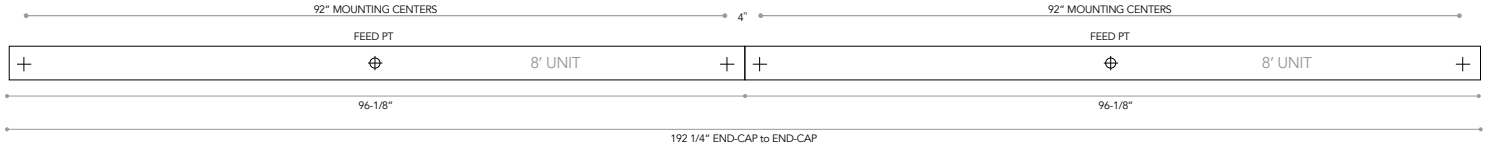


FIXTURE ROW LAYOUT: TWO UNITS 14' - 16'

14' FIXTURE

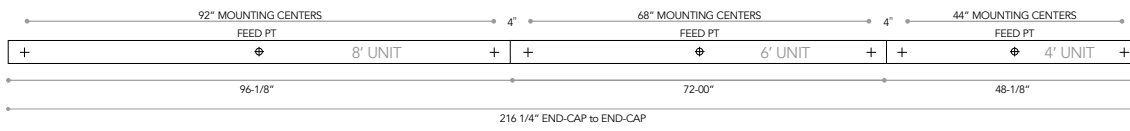


16' FIXTURE

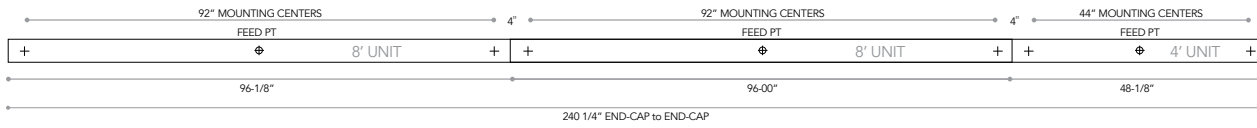


FIXTURE ROW LAYOUT: THREE UNITS 18' - 20' - 22' - 24'

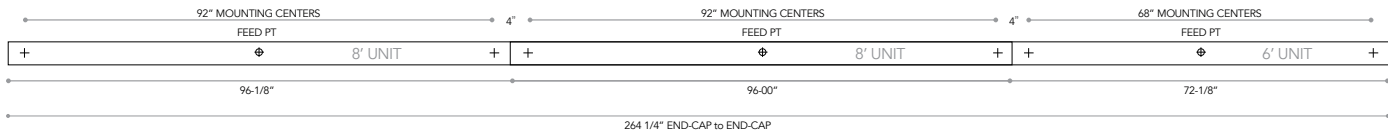
18' FIXTURE



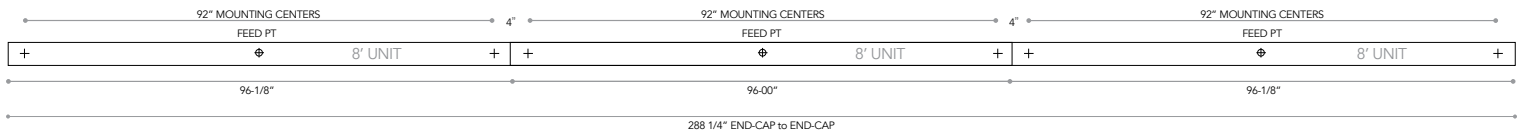
20' FIXTURE



22' FIXTURE



24' FIXTURE



FIXTURE ROW COMPONENTS

ROW LENGTH	2' - UNIT	4' - UNIT	6' - UNIT	8' - UNIT	10' - UNIT	12' - UNIT	JOINER KITS	END CAPS	END-CAP TO END-CAP
2'	1	-	-	-	-	-	-	-	24-1/4"
4'	-	1	-	-	-	-	-	-	48-1/4"
6'	-	-	1	-	-	-	-	-	72-1/4"
8'	-	-	-	1	-	-	-	-	96-1/4"
10'	-	-	-	-	1	-	-	-	120-1/4"
12'	-	-	-	-	-	1	-	-	144-1/4"
14'	-	-	1	1	-	-	1	2	168-1/4"
16'	-	-	-	2	-	-	1	2	192-1/4"
18'	-	1	1	1	-	-	2	2	216-1/4"
20'	-	1	-	2	-	-	2	2	240-1/4"
22'	-	-	1	2	-	-	2	2	264-1/4"
24'	-	-	-	3	-	-	2	2	288-1/4"
26'	-	1	1	2	-	-	3	2	312-1/4"
28'	-	1	-	3	-	-	3	2	336-1/4"
30'	-	-	1	3	-	-	3	2	360-1/4"
32'	-	-	-	4	-	-	3	2	384-1/4"
34'	-	1	1	3	-	-	4	2	408-1/4"
36'	-	1	-	4	-	-	4	2	432-1/4"
38'	-	-	1	4	-	-	4	2	456-1/4"
40'	-	-	-	5	-	-	4	2	480-1/4"
42'	-	1	1	4	-	-	5	2	504-1/4"
44'	-	1	-	5	-	-	5	2	528-1/4"
46'	-	-	1	5	-	-	5	2	552-1/4"
48'	-	-	-	6	-	-	5	2	576-1/4"
50'	-	1	1	5	-	-	6	2	600-1/4"
52'	-	1	-	6	-	-	6	2	624-1/4"
54'	-	-	1	6	-	-	6	2	648-1/4"
56'	-	-	-	7	-	-	6	2	672-1/4"
58'	-	1	1	6	-	-	7	2	696-1/4"
60'	-	1	-	7	-	-	7	2	720-1/4"
62'	-	-	1	7	-	-	7	2	744-1/4"
64'	-	-	-	8	-	-	7	2	768-1/4"
66'	-	1	1	7	-	-	8	2	792-1/4"
68'	-	1	-	8	-	-	8	2	816-1/4"
70'	-	-	1	8	-	-	8	2	840-1/4"
72'	-	-	-	9	-	-	8	2	864-1/4"

Note 1
Ceiling Mount Fixtures have Mounting Holes 2-1/8" from End-Cap

Note 2
Ceiling Mount Fixture Rows Consisting of Multiple Units (16'-72') have 4" O.C. Between Mounting Holes at Fixture Joints