



DATE

PROJECT

COMMENTS

PRODUCT FEATURES

COMPACT FIXTURE HOUSING

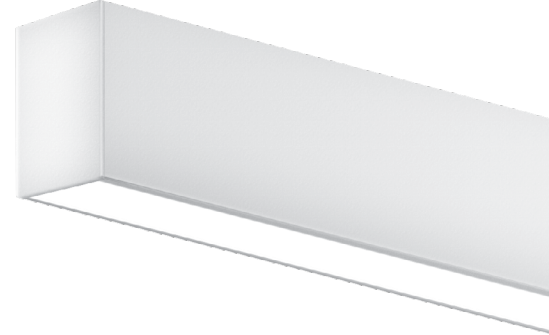
Width: 2.0" Height: 3.5"

ONE-PIECE EXTRUDED ALUMINUM HOUSING

Housing Ensures Straighter Rows and Consistent Lens Retention

120/277VAC 0-10 VOLT DIMMING TO 1% STANDARD

UP TO 122 LUMENS PER WATT



ORDERING GUIDE EX: 2C - 04 - MD - 30 - UNV - WH - EM[1]

SERIES	LENGTH	OUTPUT	CCT	VOLTAGE	FINISH
2C	XX FEET 2' INCREMENTS	HD 1000 LM/FT	30 3000K	UNV 120V-277V	WH WHITE
	OVERALL FIXTURE LENGTH EX: 20' = 20	MD 750 LM/FT	35 3500K	347 347V	BLK BLACK
		LD 500 LM/FT	40 4000K		
		CD CUSTOM DOWN EX: CD1250=1250LM/FT			

NOTES
SEE PAGE 5 FOR ROW LAYOUTS AND MOUNTING DIMENSIONS.
ALL FIXTURES ARE SUPPLIED WITH 0-10V 1% DIMMING DRIVERS STANDARD UNLESS SPECIFIED DIFFERENTLY IN OPTIONS SECTION.
MAXIMUM CUSTOMIZABLE LUMEN OUTPUT IS 1400 LM/FT.

OPTIONS NOTES
UNITS WITH EC/EM PACKS QUANTITY MUST BE THE SAME OR LESS THAN THE TOTAL RUN FIXTURE COUNT. NOT ALL OPTIONS ARE AVAILABLE WITH OTHER OPTIONS.
¹ONE SENSOR PER FIXTURE.
²SENSOR COMPONENTS SUPPLIED BY OTHERS.
³NOT AVAILABLE IN 2' FIXTURES.
⁴PLEASE CONTACT FACTORY FOR CONFIGURATION.

OPTIONS

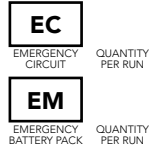
DIMMING & INTEGRATED CONTROLS¹

BLANK = STANDARD 0-10V 1% DIMMING

0-10V	Lutron
EL01 0-10V 0.1% ELDOLED	LDE1 ECOSYSTEM LDE1
DALI	Integrated Controls
OSD OSRAM DEXAL	OS OCCUPANCY SENSOR
SID SIGNIFY DALI	DOS OCCUPANCY & DAYLIGHT SENSOR
ELD01 0.1% ELDOLED	LVI LUTRON VIVE
	ENL² ENLIGHTED

ADD OPTIONS

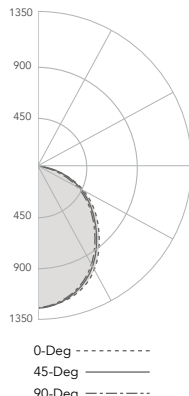
EM³ EMERGENCY BATTERY PACK (ADD QUANTITIES ON THE RIGHT)	HE HIGH EFFICIENCY
EC EMERGENCY CIRCUIT (ADD QUANTITIES ON THE RIGHT)	SP⁴ SPECIAL PRODUCT CONFIGURATION
LE LOWER ILLUMINATED EDGE	



PHOTOMETRICS

2C-04-MD-30-WH

Total Lumens: 3,066
Ratio: 0% Up and 100% Down
Wattage: 28.90
Efficacy: 106.1 (Lumens Per Watt)
Fixture Length: Four Feet

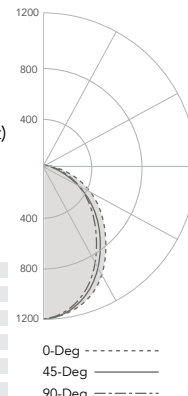


ZONAL LUMEN SUMMARY

Zone	Lumens	% Fixt
0 - 30	928	30.3
0 - 40	1477	48.1
0 - 60	2482	80.9
0 - 90	3067	100.0
90 - 180	0	0.0
0 - 180	3067	100.0

2C-04-MD-30-WH-LE

Total Lumens: 2,976
Ratio: 0% Up and 100% Down
Wattage: 28.40
Efficacy: 104.8 (Lumens Per Watt)
Fixture Length: Four Feet



ZONAL LUMEN SUMMARY

Zone	Lumens	% Fixt
0 - 30	871	39.3
0 - 40	1379	46.3
0 - 60	2291	77.0
0 - 90	2849	95.8
90 - 180	126	4.2
0 - 180	2975	100.0

ENERGY CONSUMPTION

WATTS PER LINEAR FOOT

SYMMETRICAL DOWN LIGHT

	H:1000	M:750	L:500
WATTS/FT	9.55	7.23	4.73
LUMENS/FT	1022	767	511
LUMENS/W	107	106	108

SYMMETRICAL DOWN LIGHT - HE OPTION

	H:1000	M:750	L:500
WATTS/FT	8.85	6.55	4.25
LUMENS/FT	1036	778	521
LUMENS/W	117	120	122

OPERATION

Light Engine:

The 2C is available in 3000K, 3500K & 4000K CCT all within a 2.5-Step MacAdam Ellipse and has a standard CRI of 80+.

Optics:

The back-lit extruded acrylic lens ensures high efficiency light output, in a minimal form factor for a clean, evenly illuminated lower surface with minimal glare. The optional Lower Illuminated Edge lens adds an elegant accent and reduces the side glare.

Electrical:

Class 2 programmable (factory pre-set) premium power supply, 120-277VAC input. Power factor >0.9. THD <15%. Integral Surge Protection to 2KV.

Dimming:

The 2C comes standard with 0-10V dimming down to 1%.

Emergency Battery Pack:

UL Listed 924 Emergency System has been engineered to exceed UL Minimum Safety Standards. Fixture/rows will be supplied with four wire line volt & two wire low volt feed wires. Normal fixture drivers will be wired to "black" switched hot lead with a "red" un-switched through-wire wired to EM battery pack units "qty to be specified" in nomenclature string. Contractor will determine which fixture is the main feed point and terminate fixture leads as appropriate. For most fixtures, the entire direct portion of the fixture will be illuminated by the EM Battery Pack. For 10' High-Output and 12' Medium & High-Output only the first 8' of the direct portion of the fixture will be illuminated by the EM Battery Pack.

Emergency Circuit:

Emergency Circuit fixtures are engineered so that the entire fixture is wired to the emergency circuit. Row Fixtures are constructed with an extra Hot and Neutral through wire. Emergency Circuit always powers the longest fixtures in the run first. "EC Quantity" refers to the number of fixtures in the run that are wired to the emergency circuit. For example, a 20' run with EC2 selected will be shipped as (2) 8' fixtures wired to the emergency circuit and (1) 4' fixture wired to the normal circuit. Contractor is responsible for designating the feed location and terminating fixture leads appropriately.

GENERAL

Warranty:

Ten (10) Year limited warranty from date of shipment

Lumen Maintenance:

Rated for 85% initial lumen output at 85,000 Hours of operation, operated at 25C ambient temperature; per TM-21 Guidelines published by the Illuminating Engineering Society (IES).

Certifications

All Luminaires are UL and cUL listed, approved for Dry/Damp locations.
All EM Units are UL 924 listed.

Shipping

2-Week lead time for orders up to 1000 Linear Feet.

4-Week lead time for orders with a Black finish.

Orders Greater than 1,000' to be determined at time of order.

MECHANICAL

Housing Construction:

Extruded Aluminum 6063-T5 alloy outer housing with die-formed steel internal components for strength, alignment, and mounting attachment. Our high-quality die-cast end caps are engineered to conceal all fasteners and to retain the sealing gaskets on the inside of the fixture while completing the clean and minimalistic look of this luminaire.

Alignment/Assembly:

The alignment system employs a four-point alignment and attachment method, designed to create straighter rows and minimize seams between sections (field assembled). Four alignment pins ensure the outer extruded aluminum rails are aligned, while a draw-screw secures housing-to-housing attachment. Additional alignment biscuits double as the light shields.

Lengths:

The 2C is available in a minimum 2-foot (nominal) length with additional 2-foot increments available. Longer fixture rows are available and will be configured per ALL factory specifications; typical rows are configured with 4-foot, 6-foot & 8-foot fixtures. Max run length on one power feed is 72'. Continuous runs over 72' will require 2 power feeds.

Mounting Method/Hardware:

The 2C is available for mounting upon any ceiling type, additional mounting hardware available by others.

Exterior Finish:

The 2C is available in White and Black polyester powder coat finish to ensure durability.

Integrated Controls:

The 2C is available with optional integrated controls. Sensors are conveniently designed to mount in aperture and are located at the power feed end of each fixture. For runs, each fixture section will be supplied with a discrete sensor that will control that specific section.

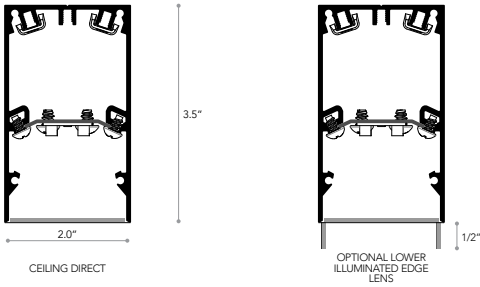
Manufactured in the USA

All ALL Luminaires and Components (with the exception of our LED boards and drivers) are proudly manufactured and assembled in the USA.

On Site Installation Notes:

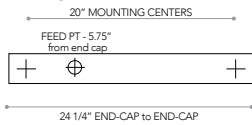
Fixture/rows will be supplied with the appropriate hardware kits to join fixtures together for specified row(s) length. End plate kits will also be supplied as required per row specifications.

MOUNTING DETAILS

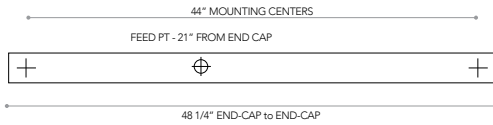


FIXTURE ROW LAYOUT: SINGLE UNIT 2' - 4' - 6' - 8' - 10' - 12'

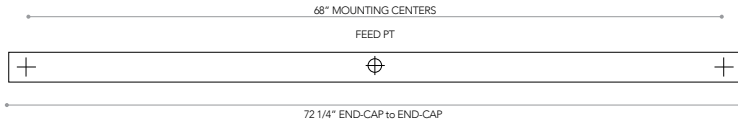
2' FIXTURE



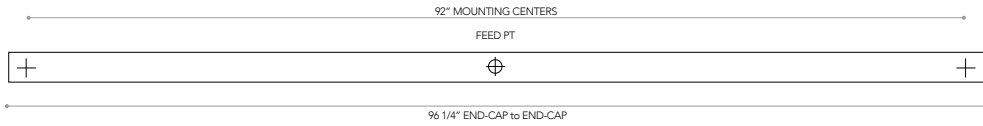
4' FIXTURE



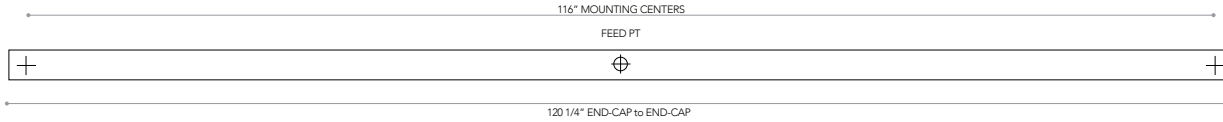
6' FIXTURE



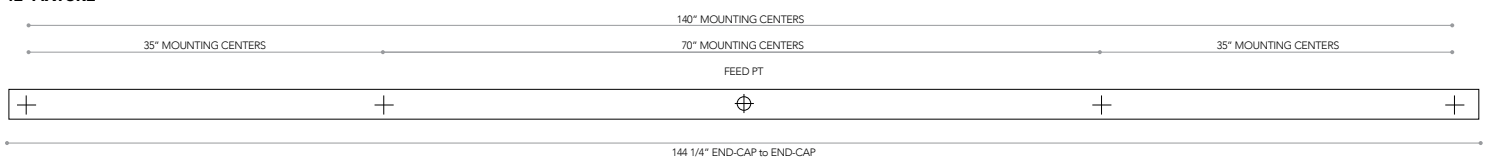
8' FIXTURE



10' FIXTURE

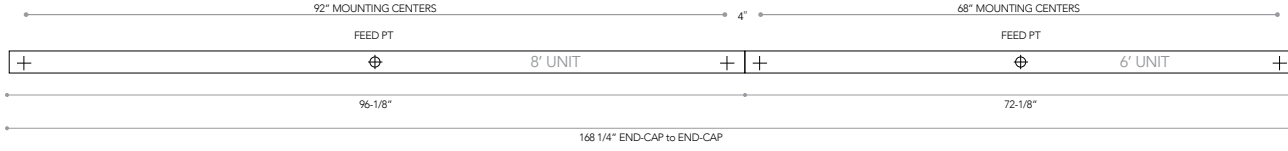


12' FIXTURE

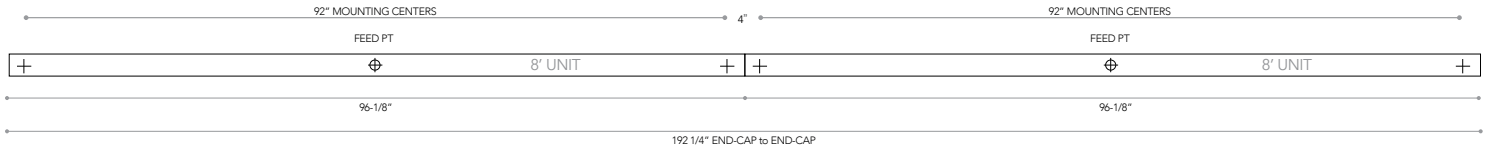


FIXTURE ROW LAYOUT: TWO UNITS 14' - 16'

14' FIXTURE

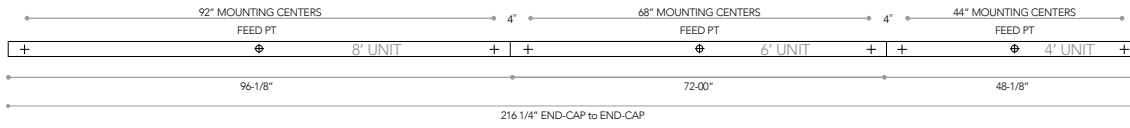


16' FIXTURE

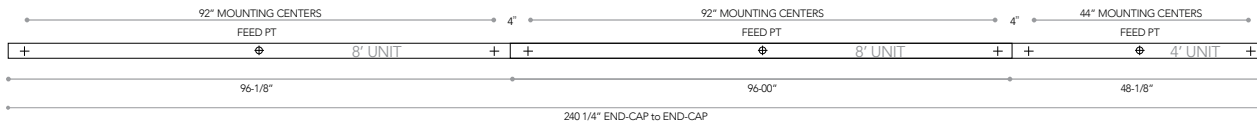


FIXTURE ROW LAYOUT: THREE UNITS 18' - 20' - 22' - 24'

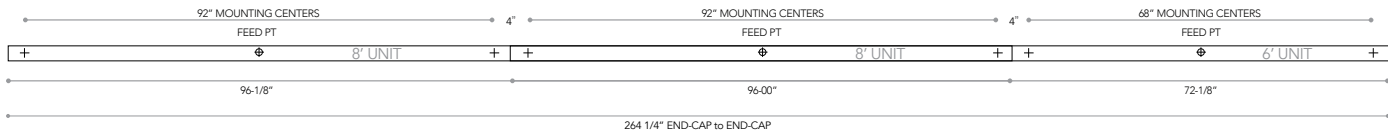
18' FIXTURE



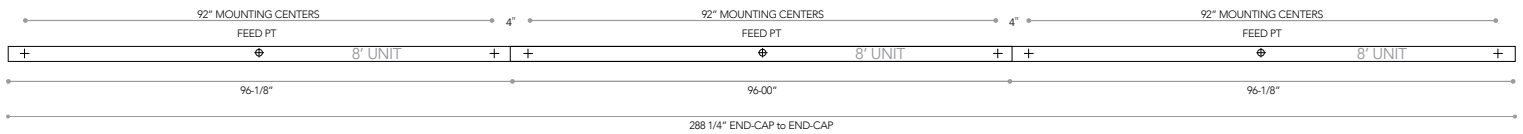
20' FIXTURE



22' FIXTURE



24' FIXTURE



FIXTURE ROW COMPONENTS

ROW LENGTH	2' - UNIT	4' - UNIT	6' - UNIT	8' - UNIT	10' - UNIT	12' - UNIT	JOINER KITS	END CAPS	END-CAP TO END-CAP
2'	1	-	-	-	-	-	-	-	24-1/4"
4'	-	1	-	-	-	-	-	-	48-1/4"
6'	-	-	1	-	-	-	-	-	72-1/4"
8'	-	-	-	1	-	-	-	-	96-1/4"
10'	-	-	-	-	1	-	-	-	120-1/4"
12'	-	-	-	-	-	1	-	-	144-1/4"
14'	-	-	1	1	-	-	1	2	168-1/4"
16'	-	-	-	2	-	-	1	2	192-1/4"
18'	-	1	1	1	-	-	2	2	216-1/4"
20'	-	1	-	2	-	-	2	2	240-1/4"
22'	-	-	1	2	-	-	2	2	264-1/4"
24'	-	-	-	3	-	-	2	2	288-1/4"
26'	-	1	1	2	-	-	3	2	312-1/4"
28'	-	1	-	3	-	-	3	2	336-1/4"
30'	-	-	1	3	-	-	3	2	360-1/4"
32'	-	-	-	4	-	-	3	2	384-1/4"
34'	-	1	1	3	-	-	4	2	408-1/4"
36'	-	1	-	4	-	-	4	2	432-1/4"
38'	-	-	1	4	-	-	4	2	456-1/4"
40'	-	-	-	5	-	-	4	2	480-1/4"
42'	-	1	1	4	-	-	5	2	504-1/4"
44'	-	1	-	5	-	-	5	2	528-1/4"
46'	-	-	1	5	-	-	5	2	552-1/4"
48'	-	-	-	6	-	-	5	2	576-1/4"
50'	-	1	1	5	-	-	6	2	600-1/4"
52'	-	1	-	6	-	-	6	2	624-1/4"
54'	-	-	1	6	-	-	6	2	648-1/4"
56'	-	-	-	7	-	-	6	2	672-1/4"
58'	-	1	1	6	-	-	7	2	696-1/4"
60'	-	1	-	7	-	-	7	2	720-1/4"
62'	-	-	1	7	-	-	7	2	744-1/4"
64'	-	-	-	8	-	-	7	2	768-1/4"
66'	-	1	1	7	-	-	8	2	792-1/4"
68'	-	1	-	8	-	-	8	2	816-1/4"
70'	-	-	1	8	-	-	8	2	840-1/4"
72'	-	-	-	9	-	-	8	2	864-1/4"

Note 1

Ceiling Mount Fixtures have Mounting Holes 2" from End-Cap

Note 2

Ceiling Mount Fixture Rows Consisting of Multiple Units (16'-72') have 4" O.C. Between Mounting Holes at Fixture Joints